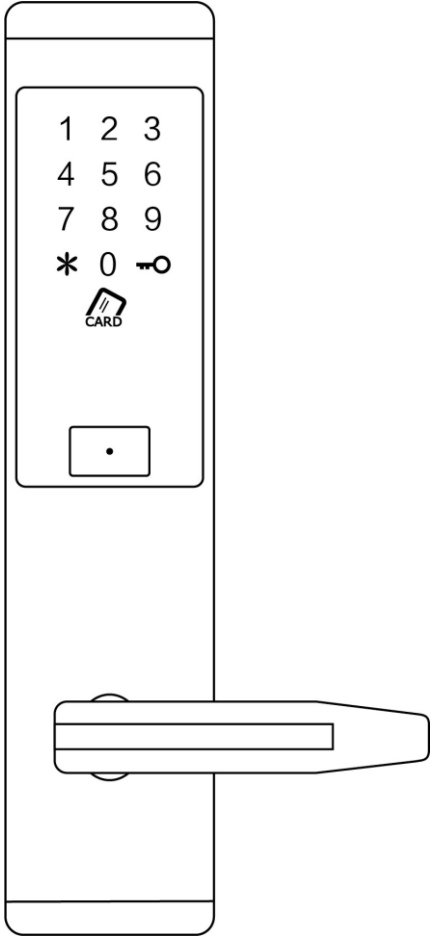


USER MANUAL – BLUETOOTH DIGITAL LOCK



Scan the QR code below to download the APP



Search Google play or APPLE Store with TTLOCK



IC Card



Passcode



Key



APP



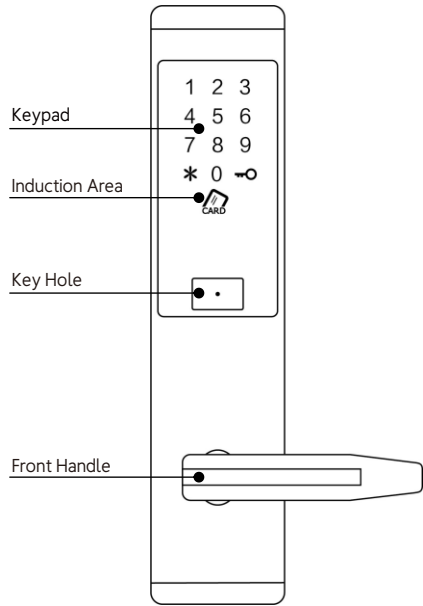
Wristband

1 SYSTEM INTRODUCTION

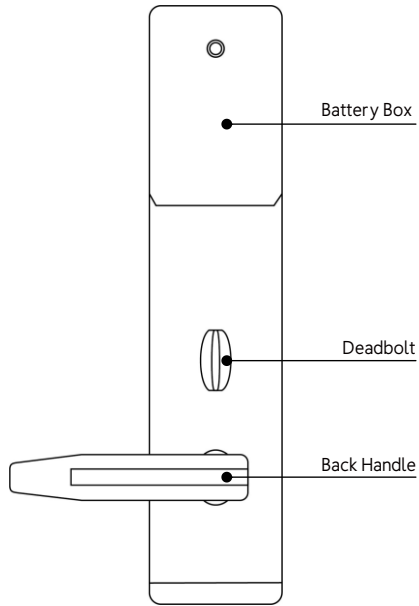
Material	Stainless steel
Available color	Silver, black, Red bronze
Door thickness	38-50mm
Communciation	Bluetooth 4.0 BLE
Support OS	IOS 7.0 above, Android 4.4 above
Batteries life	10000 times normal open (12 months)
Power supply	DC6V, 4pcs AA alkline batteries
Static current	45uA
Unlock way	Mobile phone App, code, card, mechanical key

2 PRODUCT SPECIFICATION

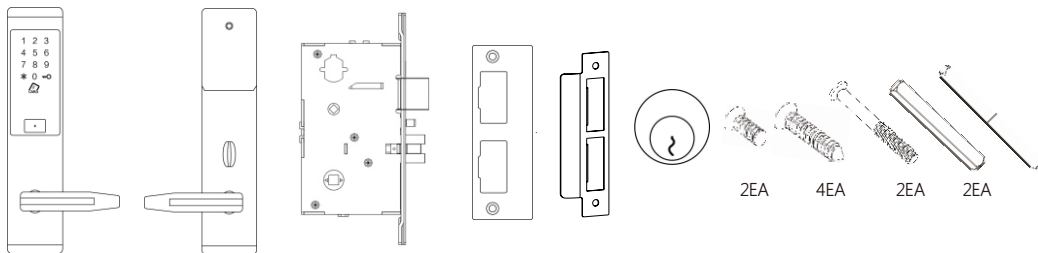
Front Panel



Back Panel

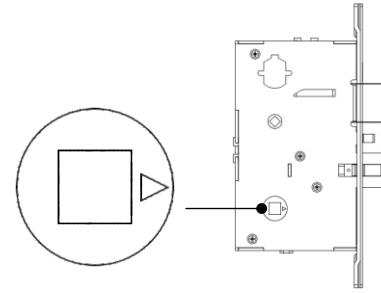


3 2020 ACCESSORIES

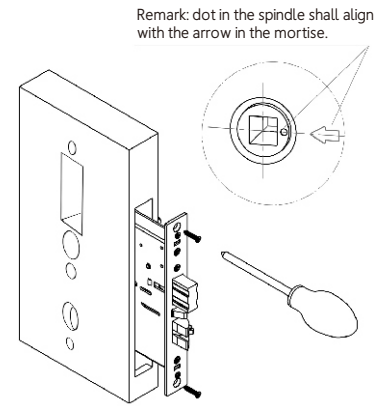


4 INSTALLATION STEPS

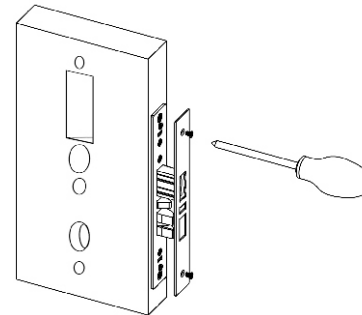
Before installation, pls pay attention to the mortise, its direction must be at same direction of the latch, besides, when you install the mortise, its triangle mark side must be facing outside of the door.



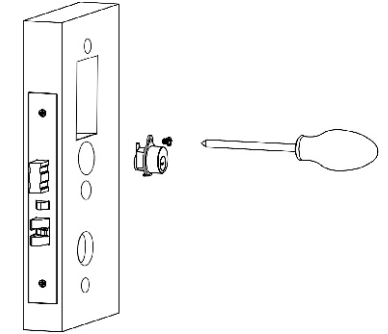
1. Fix the mortise on the door for the first step: Notice the direction of the mortise cable and insert the mortise to the drilled hole and tighten the screws of the side plate. please refer the below picture.



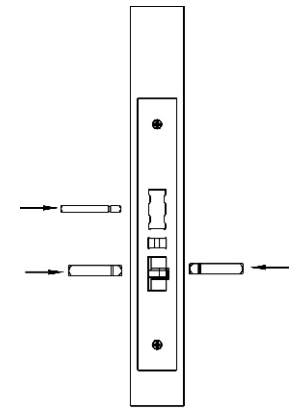
2. Fix the faceplate with the screws as the picture



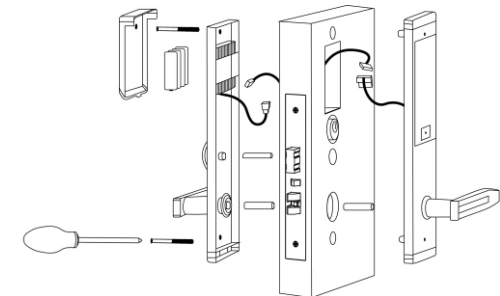
3. Fix the cylinder with the screw, notice to adjust the position when cross the cylinder wing inside the mortise.



4. Cross the square latch and the small latch from the mortise hole, notice the hole size is different, so you can only cross the square latch on top spindle position and the small latch is on the bottom position.



5. Fix the front panel and back panel with screws as the picture. Put 4pcs AA batteries inside the battery box and fix it with the screws as below picture:



Operations for Bluetooth Digital Lock

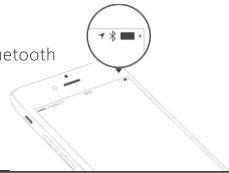
Search on APP store or Android store to download our APP and install it or scan the QR code we provided to install the APP program. You can also turn to us download the software, please read this manual carefully before installation and keep it properly.



Search Google play or APPLE Store with TTLOCK

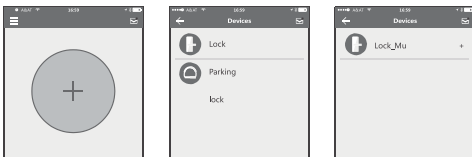
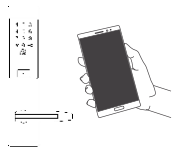
Attention

- Please turn on your phone's bluetooth function before any operation.



1.Add one smart lock on your phone

- When adding the door locks, operations must be completed near the lock.



Step 1: Click "+" button Step 2: Select the lock Step 3: Click device name

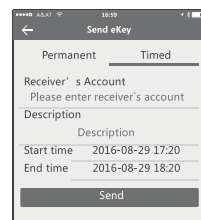
- In step 3, there will be one + after the name of door locks, notice the door lock can not be added if there is no "+" sign. The interface will jump back to the key list after adding successfully. If the operation is failed, please repeat the above steps and view the device list in step3. Makes sure your mobile is turned on with bluetooth function and the door lock is powered with the battery already.
- if you are not the lock administrator, please contact the device administrator and ask for the secondary authorization for this lock.
- This feature requires the receivers to install the APP in their phone and register one account already.

2.Send one permanent eKey



Step 1: Click device name Step 2: Click the eKey Step 3: Enter the receiver info

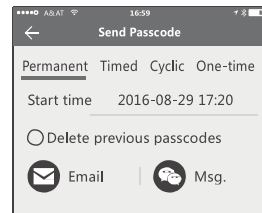
3.Send one timed eKey



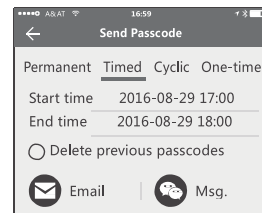
- During the authorized period of time, the receiver can unlock the lock without times limit, after the limitation of time, it will be invalidated automatically.

4.Send a timed passcode

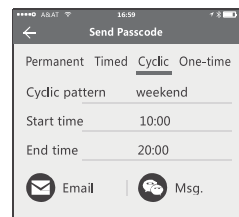
- Passcode is with four types: Permanent,timed,cylic and one-time. you can set the passcode accordingly.



- Permanent passcode will not expire, but the administrator can delete them in the user list at any time.



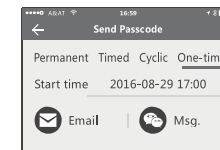
- Notice: if you tick the [Delete previous passcode], all the passcode that have been used on the lock will be deleted while the new generated passcode is used on the first time.
- The passcode shall be used once within 24 hours after the start time, otherwise it will be invalid.



The cyclic passcode's cycle is one week and can be used cyclically for one defined period of time. For example, if the time is valid when setting to 10:00~20:00 every weekend,the user can only open the door at the setting time every weekend and can not open the door at any other time.

The passcode shall be used once within 24 hours after the start time, otherwise it will be invalid.

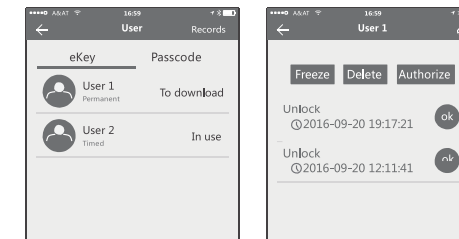
5.Send one-time eKey



- The one-time passcode is valid for 6 hours after the start time, otherwise it will be invalid.

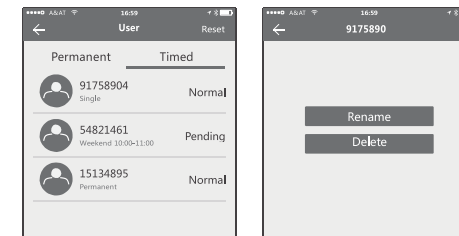
6.User management

- Passcode is with four types: Permanent,timed,cylic and one-time. you can set the passcode accordingly.



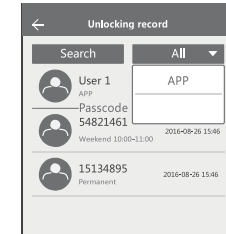
- In the list of eKey user management, click the user perform the according operation:

[Modify Validity]: click the to modify the validity period of user's previous eKey
 [Freeze]: The user key can be temporarily frozen so that it is disabled the unlock function. The function can be recovered after freezing is removed.
 [Authorize]: Authorize the receiver to send an eKey or passcode to other users, In all of the above operations, the phones of two parties need to connect to the internet, if the users can not connect the network correctly, the administrator's command will be responded after the internet is connected.



- In the list of passcode user management, you can label the user. Click the user to perform the according operation:
 [Rename]:This function can label the user and facilitate the management of passcodes.
 [Delete]: This function can delete the user directly.

7.Unlocking Records Query



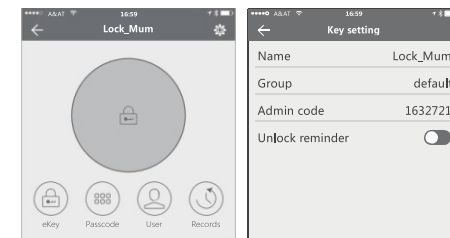
- Each time the ordinary user unlocks the lock with the eKey sent by the administrator, one record will be generated automatically and sent to the administrator's phone APP.

Attention

- If one lock has been added by one phone, it can not be added by other new phone unless:
 - The previous administrator delete it from his APP next to the lock.
 - The reset button on the lock is long pressed for initialization.

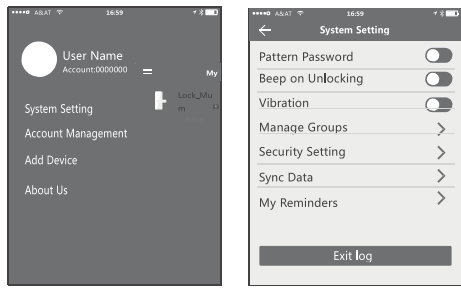
- Deleting the passcode must be operated next to the lock.
- Enter the software interface and click the "=" button to add locks as the pop-up list suggest.

8.Key Setting



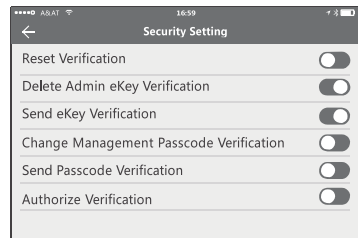
- Enter the device interface and click the button to name the device and view the current administrator's passcode.

9. System Setting



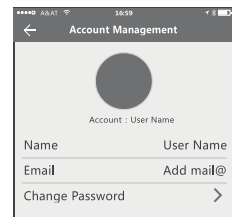
- Enter the software interface and click the "≡" button, the options can be selected in the pop-up users.

10. Security Setting



- The verification function in the security setting is to prevent the illegal operation on a stolen or lost mobile phone. This function is only activated when the administrator operates the device and manages the users.

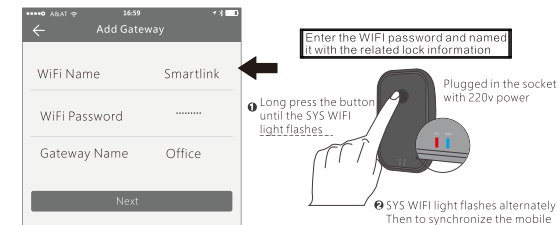
11. Account Management



- Click the option to pop up the picture the uploading feature and set the image, display your account, mailbox and other information. To modify the password, verification of original password which is needed..

WiFi Gateway(G1 Version)

- The WiFi gateway function in the APP is to allow the user to remote change the passcode, this is to enable the user to modify/delete the passcode when they are not close to the door lock. Under the system setting, you can find the gateway option:



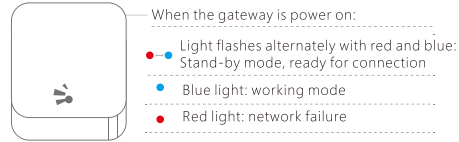
After the step is finished, the WiFi router will be linked with the door locks. Then you can remote change the passcode or valid time for the door locks.

WiFi Gateway(G2 version)

- The new version WiFi gateway is with improved performance and long communication distance. Please refer to the parameters and operations.

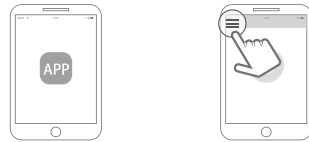
Model:	G2
Dimension:	70x70x26mm
Network	WiFi 2.4G
IEEE Standard:	802.11b/g/n
Power Interface:	Type-C USB
Power Input:	DC5v/500mA

Light Status



Pair the Gateway with APP

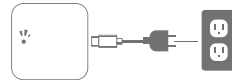
1. Activate the APP on mobile
2. Press the button "≡"



3. Select the [Gateway]
4. Select the [G2]



5. Plug the gateway and power on it, while the light flashes alternately with red and blue



6. Press the "+" sign



7. Add Gateway
8. Select the WiFi and enter the password



9. Finish pairing Gateway

- ⚠ Notice: if times out, please power on the gateway and try it again.

SALES AND SERVICE TERMS

Please read the manual carefully before use!

Limited 1-Year Electronic Warranty Limited Lifetime Mechanical and Finish Warranty

This product comes with a 1-year limited warranty on electronic parts and a limited lifetime

Mechanical and finish warranty against defects in materials and workmanship under normal use to

the original residential user. Proof of purchase and ownership is required for the warranty to be in effect.

- Any change submit to our confirmation!
- Any error or question in our manual or sales term, please feel free to contact with us.
- It is forbidden to copy our manual and for other usage, except the authorized company and users.
- For any wrong operation or installation to the user or third party, we do not responsible for the duty.
- For the damage caused by anthropic factor or inevitable reason, we do not pay for the loss or maintain for free, please check our after sale service terms.
- Please do not take apart the lock if you are not technician, if necessary, please make the operations under the guide of technician.
- Notice: there maybe a little difference for product pictures with real product, please subject to our real products.
- After changing the battery, please do not throw away the battery, kindly refund to recycle bin in case of pollution!

